

**St. Clair County 2005  
4-H & Youth Fair  
Rabbit Project Record Book**  
*Distributed by St. Clair County MSUE 4-H Programs*

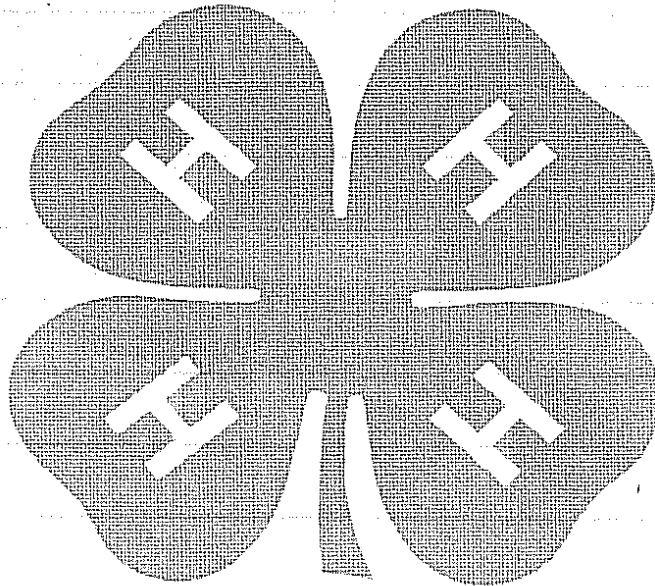
Exhibitor Name: \_\_\_\_\_ Years in Rabbit Project \_\_\_\_\_

Age as of 12/31/2005 \_\_\_\_\_ 4-H Club Name \_\_\_\_\_

*Must be turned into Rabbit Superintendent by 3 pm Monday of Fair*

Note to members-Use the following books or resources to help you locate answers for this record book  
"4-H Skills for Life" Animal Science Series -Rabbits  
Rabbit Learning Lab Kit  
Rabbit Standard of Perfection  
Resource material available for loan or purchase at the MSU Extension Office

Place photo of project animal and/or member here.



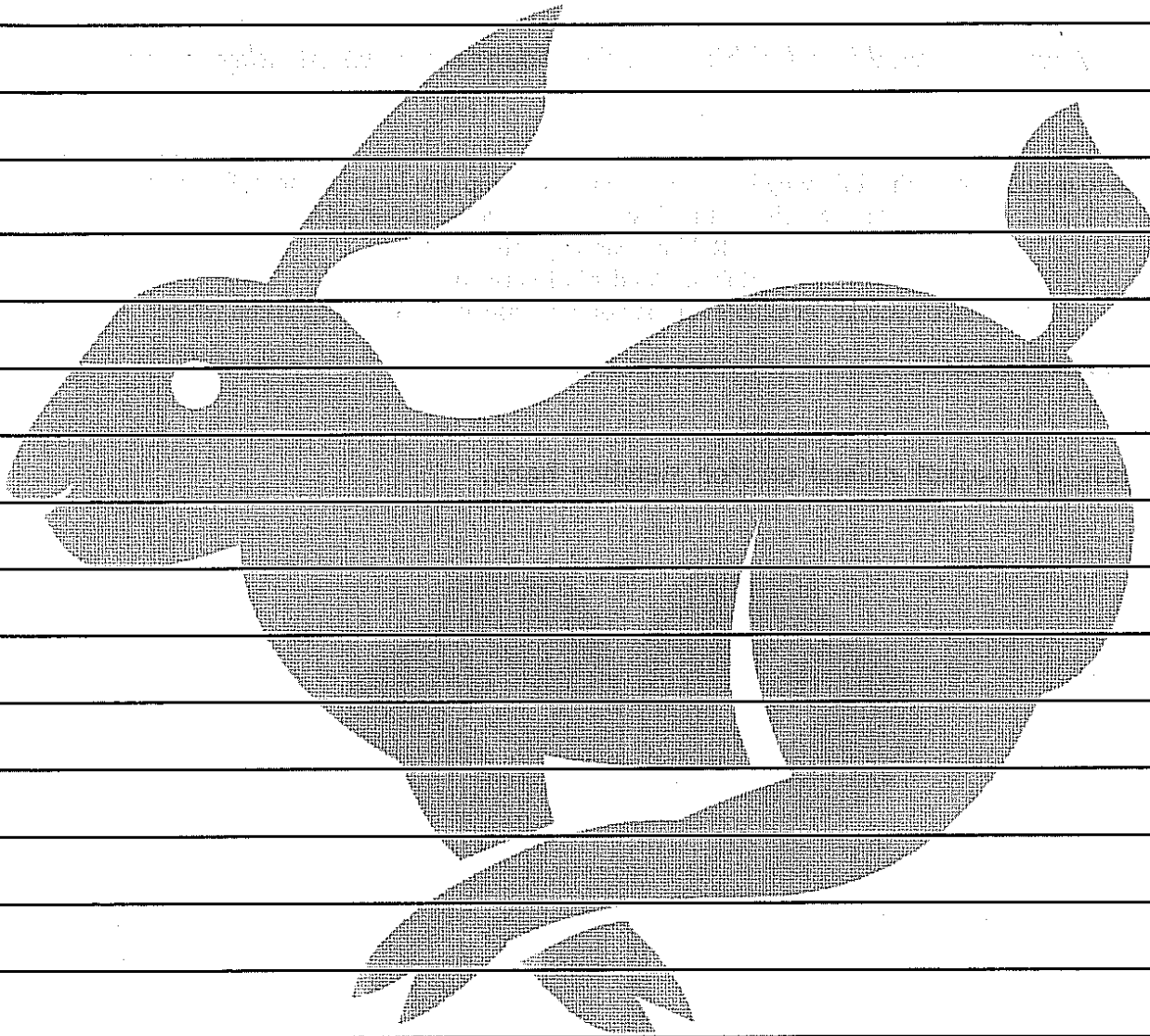
Member's signature \_\_\_\_\_

Parent, Guardian or 4-H Leader's signature \_\_\_\_\_

Other 4-H project areas that you are involved in \_\_\_\_\_

\_\_\_\_\_

Tell us about yourself. Include the following; 1. Number of rabbits you own, 2. How many different breeds, 3. Years raising rabbits and 4. What has your club work meant to you?



# Rabbit Breeds

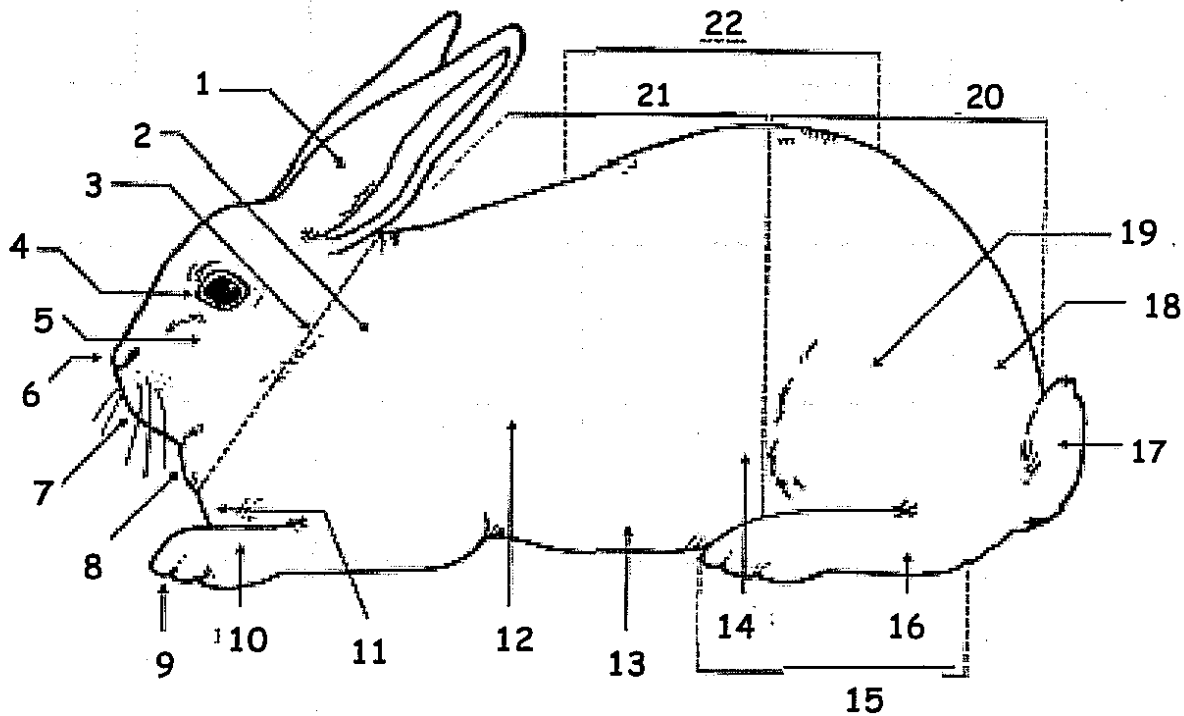
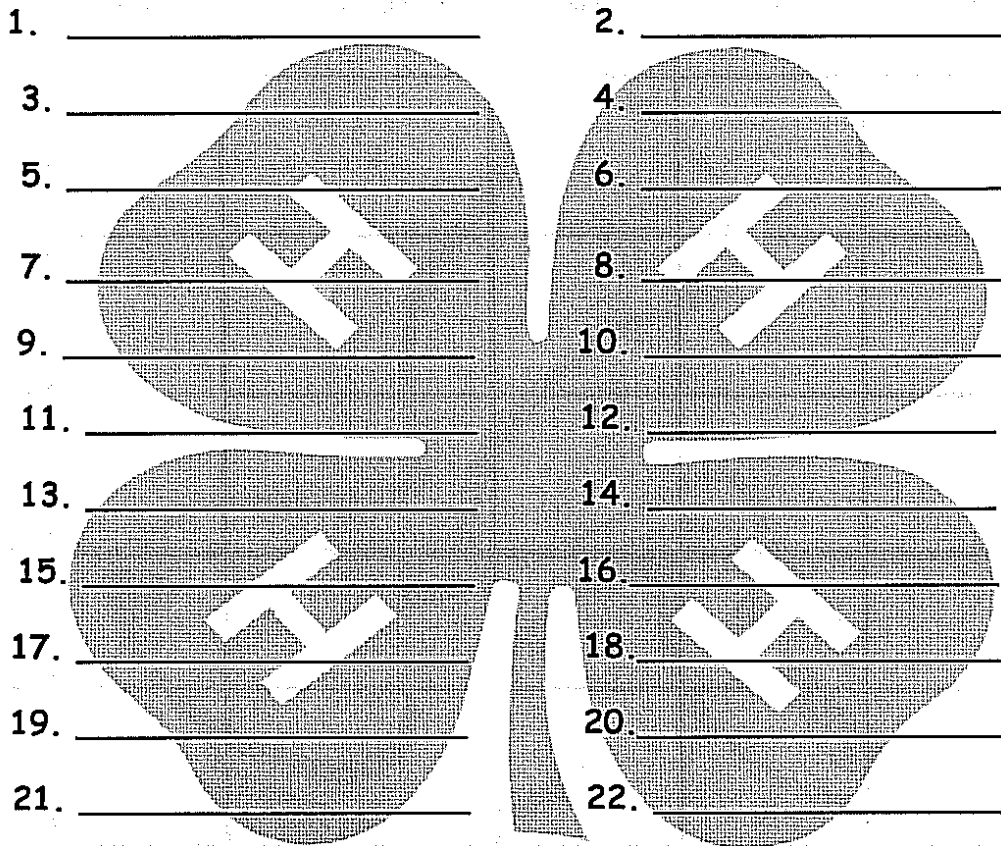
Choose rabbit breeds and complete the following chart

*Pre-novice 4 breeds, Novice list 8 breeds, Advance list 10 breeds*

Breed	Ideal Weight	Color (s)	Origin of Breed	Body Type	Class
1.					
2.					
3.					
4.					
5.					
6.					
7.					
8.					
9.					
10.					

# Rabbit Parts

Identify the rabbit parts. Fill in the blanks with the correct part name.  
*Pre-novice identify 8 parts, Novice identify 12 parts, Advanced identify all parts*



## Rabbit Tattooing

Complete all questions (Question # 9 advanced only)

1. As you stand behind the rabbit, the private tattoo belongs in which ear? \_\_\_\_\_

2. How many letters or numbers will the tattoo pliers hold? \_\_\_\_\_

3. What are some potential problems if tattooing is not done carefully? \_\_\_\_\_

\_\_\_\_\_

\_\_\_\_\_

4. How can you make sure the character pins/digits will be transferred into the ear correctly? \_\_\_\_\_

\_\_\_\_\_

5. What if ink gets on the ear? \_\_\_\_\_

\_\_\_\_\_

6. How might you correct a poor tattoo? \_\_\_\_\_

\_\_\_\_\_

\_\_\_\_\_

7. Put your rabbits tattoo # in the correct ear of the rabbit pictured.

8. On the rabbit pictured, label which ear the identification tattoo and which ear the registrar's tattoo numbers go in.

9. Advanced question; What are the requirements to register a rabbit with the ARBA?

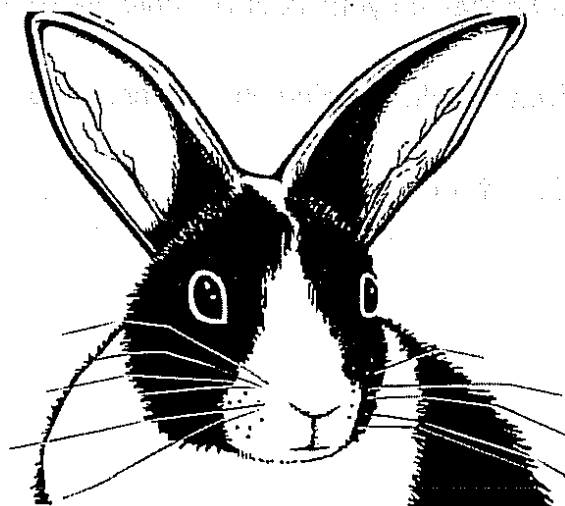
\_\_\_\_\_

\_\_\_\_\_

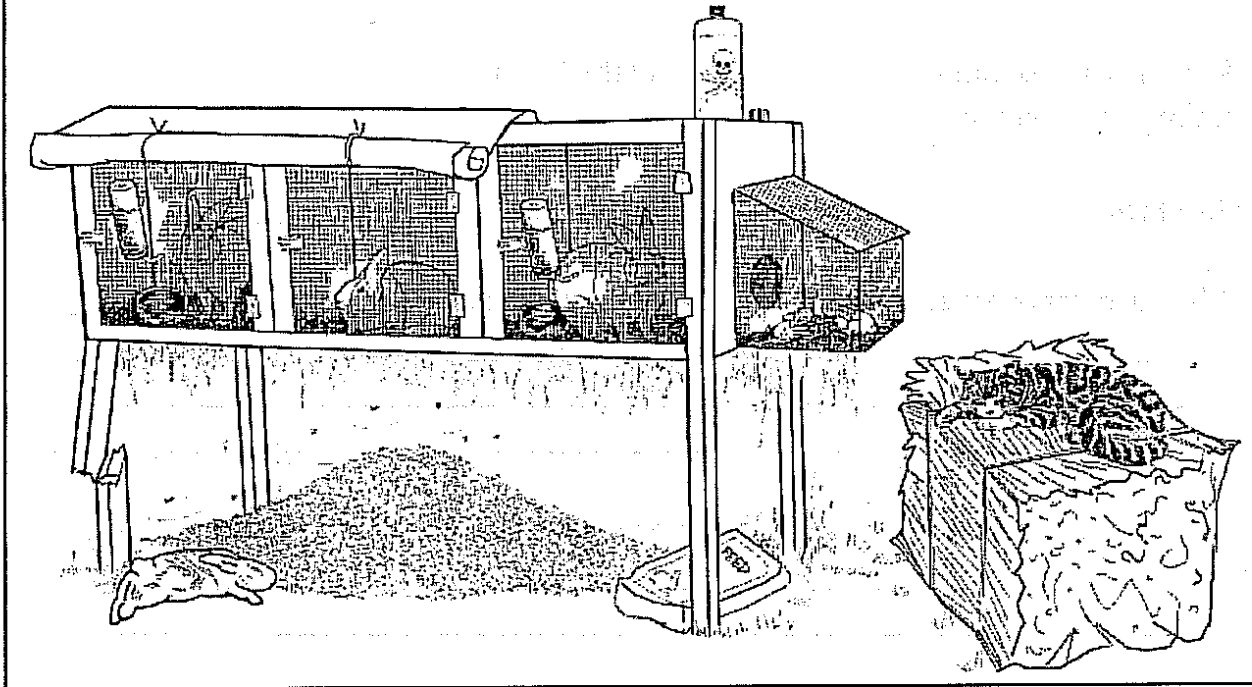
\_\_\_\_\_

\_\_\_\_\_

\_\_\_\_\_



# Rabbitry Sanitation Is Critical



1. List as many sanitation problems with the rabbitry pictured above as you can.

2. What is harder on your rabbits-cold weather or extreme heat? \_\_\_\_\_

3. How often should feeding and watering equipment be cleaned? \_\_\_\_\_

4. Do drafts affect rabbits? \_\_\_\_\_

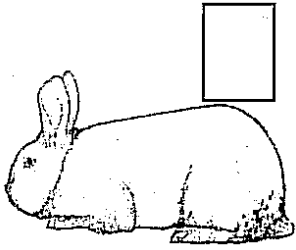
Attach a picture of your current rabbitry below.

Place your rabbitry picture here!

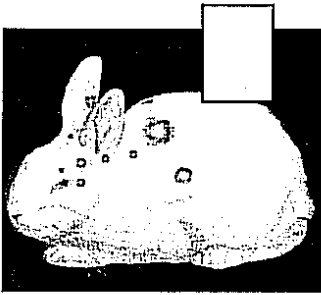
## Ailments and Disorders

Match the name of the ailment or disorder with the pictured symptom.

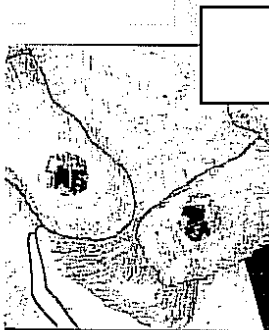
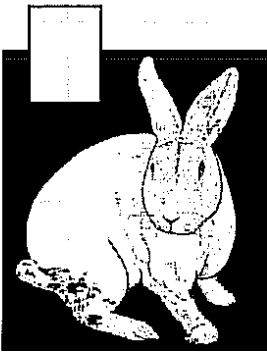
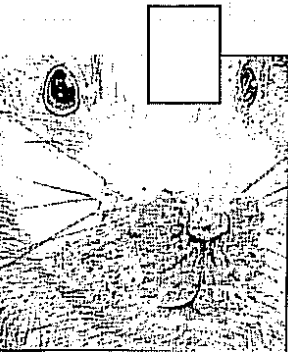
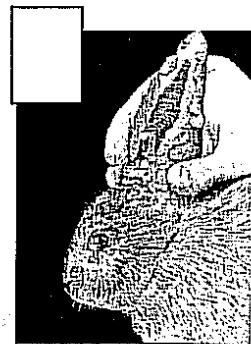
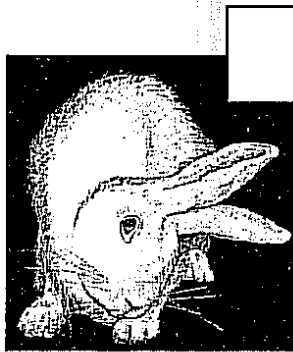
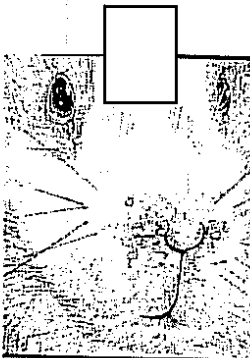
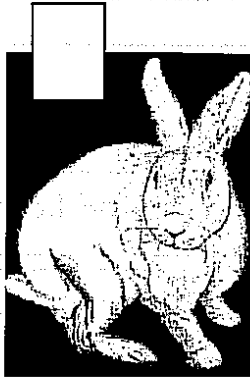
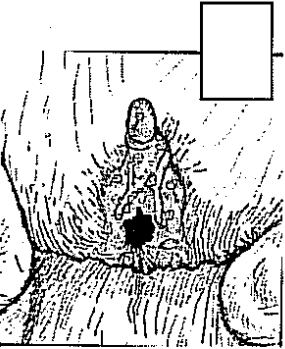
*Pre-Novice identify four, Novice identify seven, Advanced identify fourteen*



- |                 |               |                  |
|-----------------|---------------|------------------|
| 1. Sore Hocks   | 2. Ear Canker | 3. Wry Neck      |
| 4. Weepy Eye    | 5. Snuffles   | 6. Mange         |
| 7. Vent Disease | 8. Wound      | 9. Enterotoxemia |



- |                  |                 |               |
|------------------|-----------------|---------------|
| 10. Myxomatosis  | 11. VHD         | 12. Ring Worm |
| 13. Malocclusion | 14. Coccidiosis |               |



## Rabbit Feeding Record

1. What kind of feed do you use? \_\_\_\_\_
2. What percent of protein does your brand of food have? \_\_\_\_\_
4. What percent of fiber does your brand of food have? \_\_\_\_\_
5. What is your feeding schedule? \_\_\_\_\_
6. What is your watering schedule? \_\_\_\_\_
7. Do you feed anything other than pellets? \_\_\_\_\_  
 If yes what do you feed and why? \_\_\_\_\_  
 \_\_\_\_\_  
 \_\_\_\_\_
8. Attach your brand of feed tag below.

<b>Feed and Labor Record</b>
------------------------------

Month	Cost of food Per Month	Pounds of food Used in a month	Hours spent training and grooming per month

Attach your feed tag here.



## Rabbit Fur and Wool

Fill in the blanks (answer all 5)

1. \_\_\_\_\_ has a dense undercoat protected by longer guard hairs.
2. \_\_\_\_\_ is finer and has glass-like, transparent hair shaft which reflects light and produces a bright luster or sheen.
3. \_\_\_\_\_ is very dense. It's guard hairs are nearly the same length as the undercoat, and the fur stands at a 90 degree angle to the skin, giving a plush, velvet-like feeling.
4. \_\_\_\_\_ has long fibers that are collected and spun into yarn to make crafts and garment, or sold in a raw state.
5. There are four distinct types of wool, \_\_\_\_\_, \_\_\_\_\_, \_\_\_\_\_, and \_\_\_\_\_.

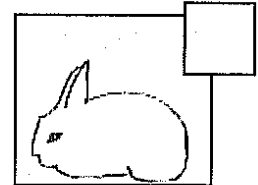
**Match the rabbit types to the picture.**

*Put the correct number in the picture square.*

*(Pre-novice match 2 and name a breed for those types, Novice match 3 types and name a breed for those types, Advanced match 4 types and name 2 breeds for each type.)*

1. Semi-Arch

\_\_\_\_\_

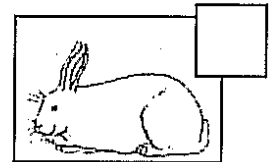


2. Commercial

\_\_\_\_\_

3. Compact

\_\_\_\_\_

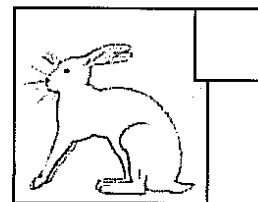
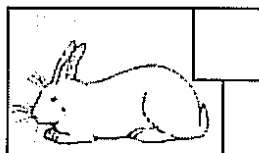
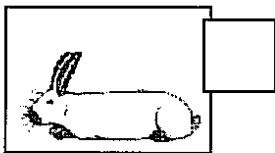


4. Full-arch

\_\_\_\_\_

5. Cylindrical

\_\_\_\_\_



## Rabbit Terms

Match the term with the definition.

Draw a line from the definition to the term.

1. Blemished
  - The process by which young rabbits are removed from the doe to prevent nursing, generally between four and eight weeks old, depending on the breeding schedule and breed of rabbit.
2. Condition
  - A book stating the characteristics of each recognized breed of rabbits and approved by a registering organization.
3. Four class rabbits
  - Young meat rabbit 3 - 5 pounds.
4. Fryer
  - Middle joint or section of the hind leg between the foot and hip.
5. Hock
  - Category for all breeds having ideal adult weight under nine pounds.
6. Kindle
  - Flaws or defects, especially those that affect the appearance.
7. Molt
  - The process of shedding or changing the fur, two time per year.
8. Rabbitry
  - The area or building in which a group of hutches and rabbits are kept.
9. Standard of perfection
  - The permanent identification mark of a rabbit which is placed in the left ear.
10. Tattoo
  - The process of giving birth to young rabbits.
11. Weaning
  - The physical state of a rabbit-it's health, cleanliness, texture, molt of fur and grooming.

## Disqualifications

*Novice complete questions 1 thru 7. Seniors complete all questions.*

1. Name one breed of rabbit that you own, \_\_\_\_\_ . (Base your responses to questions 2 thru 7 on this breed)
2. Name the potential disqualifications for that breed? \_\_\_\_\_  
\_\_\_\_\_  
\_\_\_\_\_
3. List all varieties of this breed? \_\_\_\_\_  
\_\_\_\_\_
4. What fur type is this breed? \_\_\_\_\_
5. What body type does this breed have? \_\_\_\_\_
6. What are the maximum weights for senior bucks: \_\_\_\_\_ senior does: \_\_\_\_\_ junior bucks: \_\_\_\_\_ junior does: \_\_\_\_\_
7. List potential faults for this breed:  
Ailments: \_\_\_\_\_  
General: \_\_\_\_\_  
Structural: \_\_\_\_\_  
Color: \_\_\_\_\_

## Meat Production

8. Name the four factors in the order of their importance, for judging meat pens.  
1. \_\_\_\_\_ 2. \_\_\_\_\_  
3. \_\_\_\_\_ 4. \_\_\_\_\_
9. Name two types of meat classes. A. \_\_\_\_\_ B. \_\_\_\_\_
10. What are the required age and weights for the meat classes you listed above?  
A. Age: \_\_\_\_\_ Maximum weight: \_\_\_\_\_  
Minimum weight: \_\_\_\_\_  
B. Age: \_\_\_\_\_ Maximum weight: \_\_\_\_\_  
Minimum weight: \_\_\_\_\_

